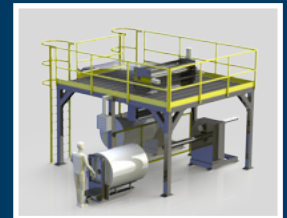
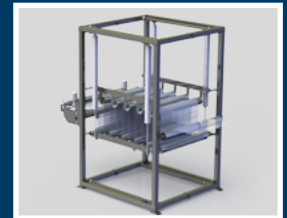


# Slitters - Coaters - Accumulators - Winders



[www.ptiextruders.com](http://www.ptiextruders.com)



**PTI Headquarters**

## Table of Contents

Slitters .....	4
Coaters .....	6
Accumulators .....	8
Winders Cantilevered .....	10
Winders A-Frame .....	12
Quick & Easy Operations .....	14
System Examples .....	16
Customer Services .....	18

PTI offers several options for Slitting, Coating and Winding sheet. Slitting systems include both rotary and razor style slitters depending upon the application. High crystalline polymers perform best with a rotary style slitter whereas, soft flexible polymers works well with razor style. Coaters include simple submersion style with squeegee, indirect impingement with squeegee and a controlled transfer roll coater that is featured in this brochure. Accumulators are recommended to stop the sheet for safely operating the winding equipment. It is recommended at higher web speeds, particularly over 100+ fpm to aid in the proper transfer and handling of the sheet. This also improves the overall quality of the rolls being produced as sheet tension is maintained and the operators have ample time to transfer the web with accuracy. Winders featured herein, include Cantilever style which eliminates core-rod handling and A-frame style for larger roll diameter build-up.

*Please Note: Other winders are available including Fixed Shaft, Turret style and Fully Automatic (refer to [www.ptiextruders.com](http://www.ptiextruders.com) for more information on these styles of winders). Systems can be configured for handling 1 - 3+ webs simultaneously depending on your specific processing requirements.*

A dark blue world map with white outlines of continents and countries, serving as a background for the text.

## About PTi

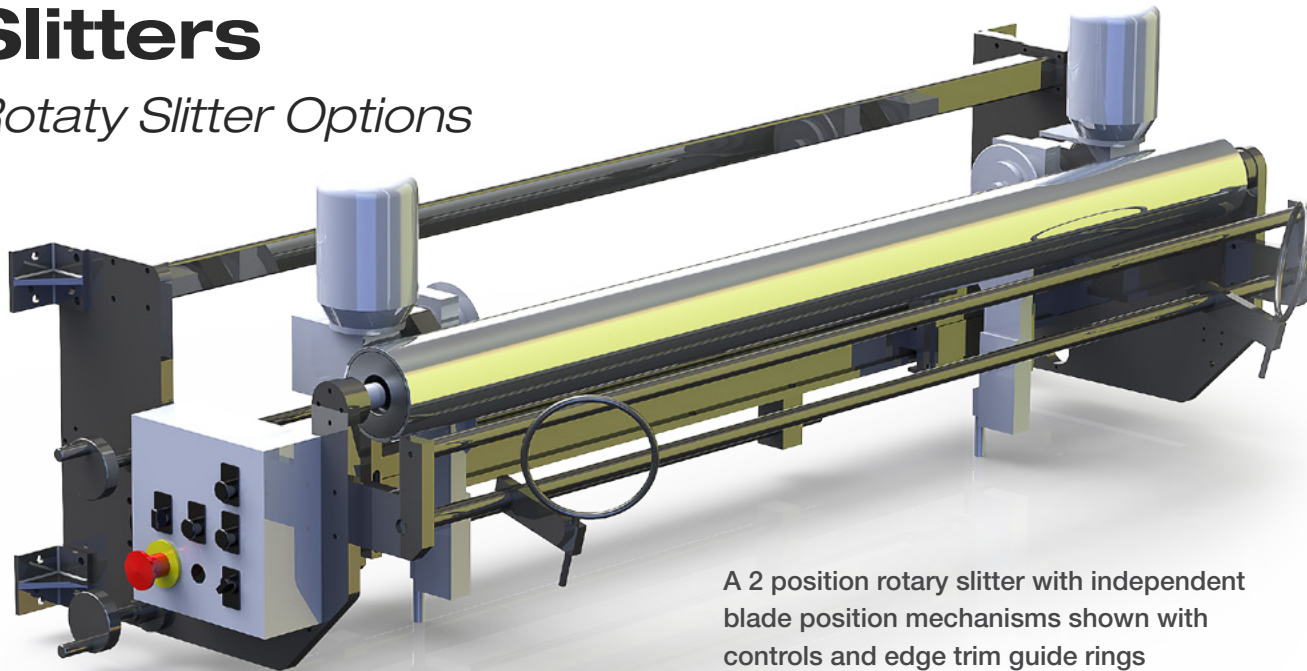
PTi is a leading producer of high quality plastic sheet extrusion systems. Engineered to exact standards PTi systems offer a unique array of design features resulting in superior equipment performance. Supporting a world wide marketplace, PTi provides its customers with sheet extrusion systems that manufacture sheet goods to the highest quality standards found anywhere throughout the industry. This brochure contains a sampling of sheet winding products and services that PTi offers. While not intended to be all inclusive there are many equipment configurations contained in the pages to follow that provide solutions to a multitude of applications facing the sheet producer for today and beyond.

*Product descriptions and/or performance data that are represented herein are for information purposes only and are not intended for any other use. PTi reserves the right to make changes and/or enhancements to any of the product and service information contained herein without prior notice.*

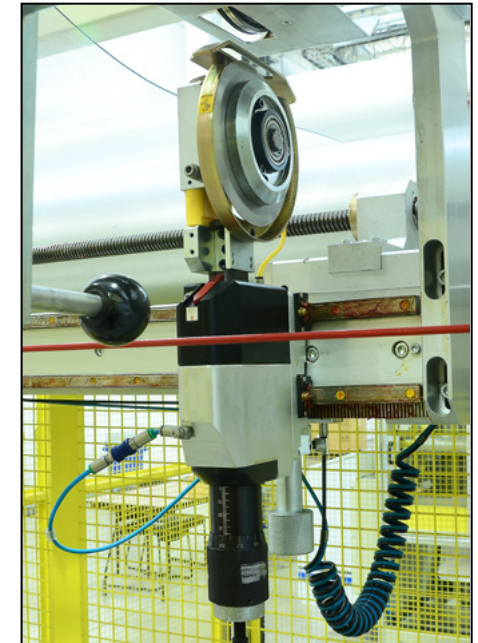


# Slitters

## Rotary Slitter Options



A 2 position rotary slitter with independent blade position mechanisms shown with controls and edge trim guide rings



Rotary slitter with driven anvil assembly features precision dove tail mount, positioning mechanism and mating anvil blade ring

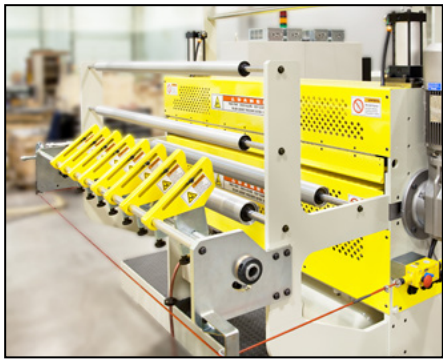


Operator moves the blade assemblies into the desired position by rotating the mechanism hand wheels

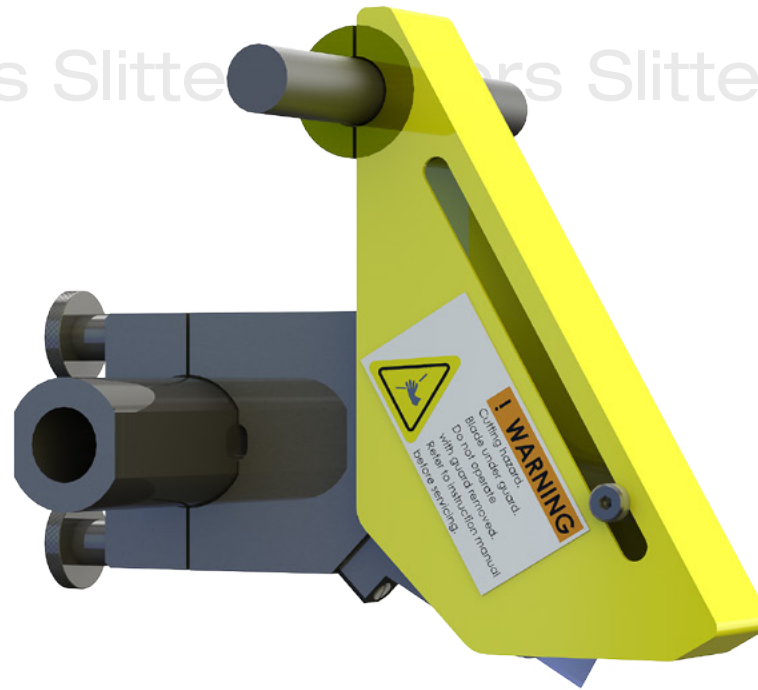
### Features:

- **Heavy duty frame infrastructure supports assembly and eliminates operational vibration**
- **Rotary blade assemblies mount to a precision dove tail**
- **Modular design features permit easy operation and maintenance**
- **Positioning mechanisms move the blade assemblies to the desired locations with digital accuracy**
- **2 assemblies are required for removing edge trim (one on each side of the sheet) and an additional center slitter is required for 2-up winding located on the mezzanine prior to the winders**

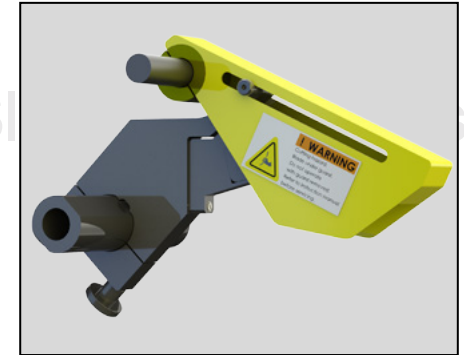
## Razor Slitter Options



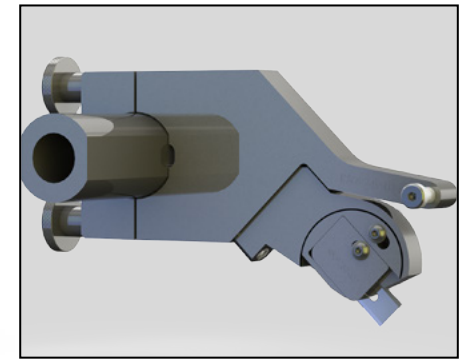
Eight razor assemblies pictured on application above creates 7 ribbons and removes edge trim



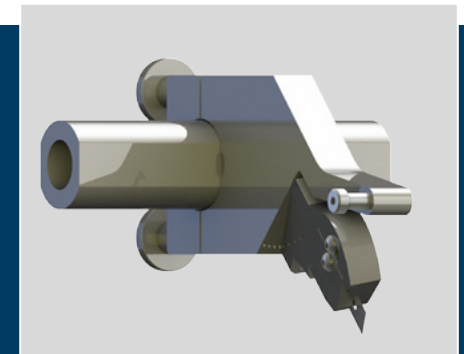
Ultra advanced razor assembly design features a dual configurable knife holder to optimize cutting results in the most demanding applications



Blade fully retracts into the guard for safety purposes



Blade 'pitch' adjusts +/- 15 deg. to optimize performance & prolong blade life



Blade 'roll' adjusts +/- 15 deg. for precise cutting & to minimize edge risers

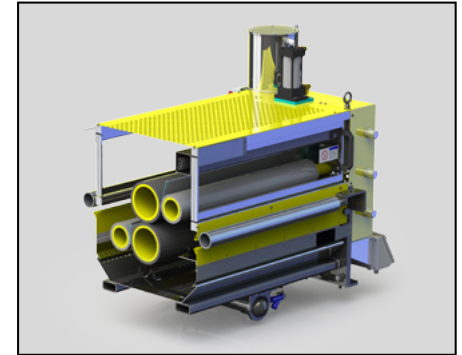
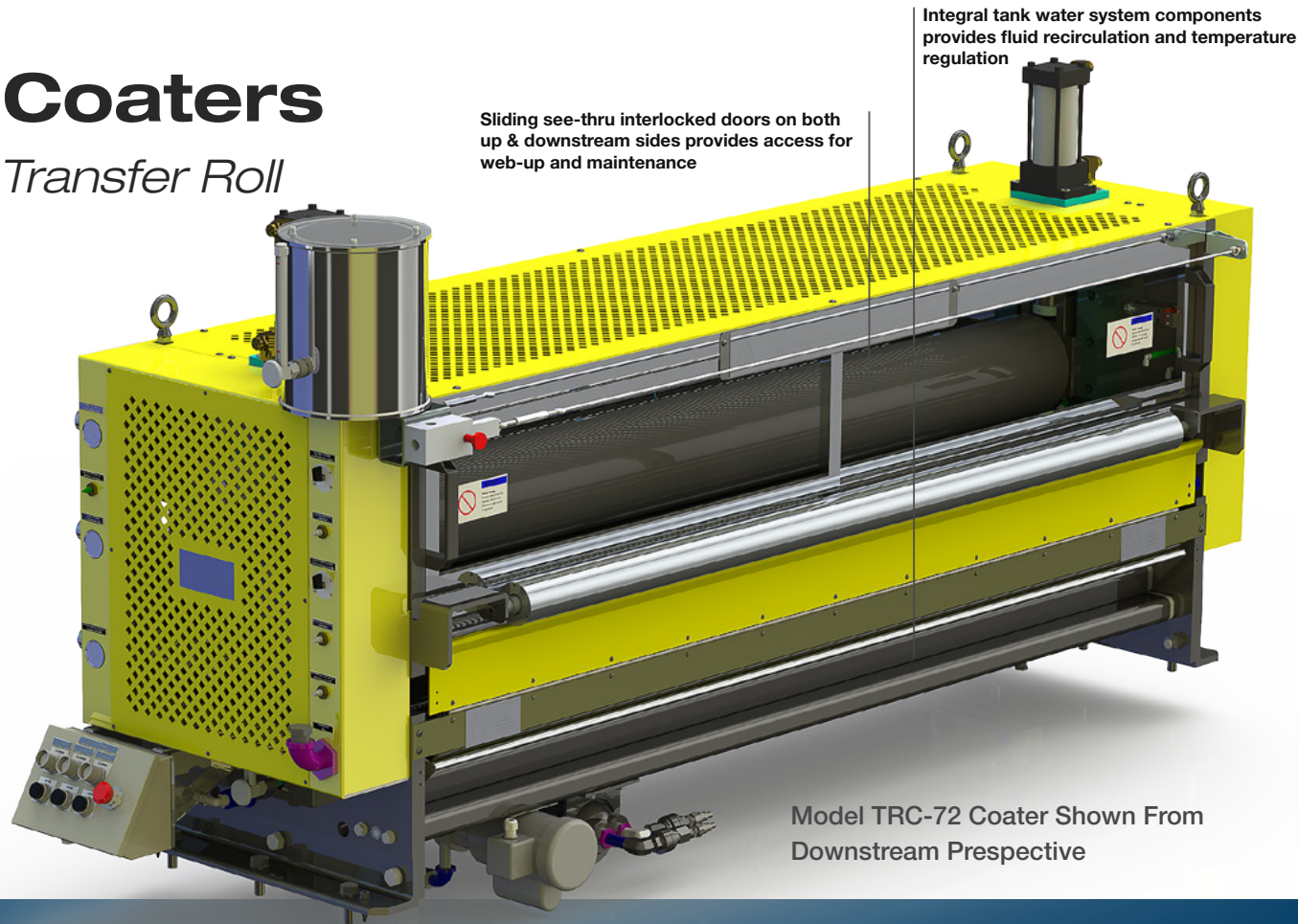
### Features:

- Heavy duty mounting frame features keyed blade holder guide rod for precision cutting and secures blade assemblies into the proper position
- Separate guard guide rod permits razor blades to fully retract into the safety guards and protrude outward when in the cutting position
- Knurled knobs provide manual release for ease of blade holder positioning
- Gradation scale indicates incremental blade holder position for desired cutting location
- Heavy duty gearbox and hand crank raises and lowers the blade assemblies out of and into the cutting position and eliminates back driving

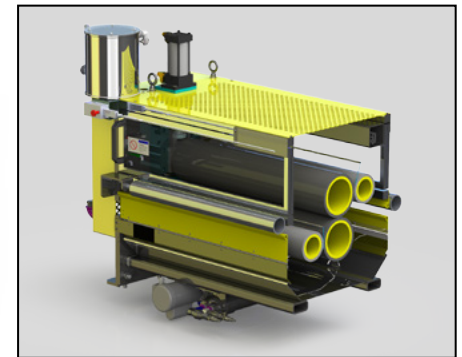


# Coaters

## Transfer Roll



Cut-away images reveal squeegee and transfer roller relationship and neutral web path pass-thru



Upstream (top) and Downstream (bottom ) perspectives shown.

### Features:

- **Neutral pass-thru for ease of thread up**
- **Top, bottom or both side coating application via contact transfer rollers combined with regulated squeegee rollers and precision fluid delivery**
- **Precise delivery of coating solution via flow control valves to the delivery tube**
- **Modular compact design permits conveyor or floor mounting**
- **Recirculation tank, pump and heat exchanger regulates fluid temperature for optimum performance**
- **Stainless steel tank and associated wetted components coupled with coated and plastic fittings offers corrosion resistant operation**



Modular design easily integrates onto the sheet extrusion system or can be separated for floor mounting



All motion parts are fully guarded for safety

Pneumatic control valves adjust squeegee roller intensity regulating coating fluid volume delivery

Idlers assure proper web path is maintained

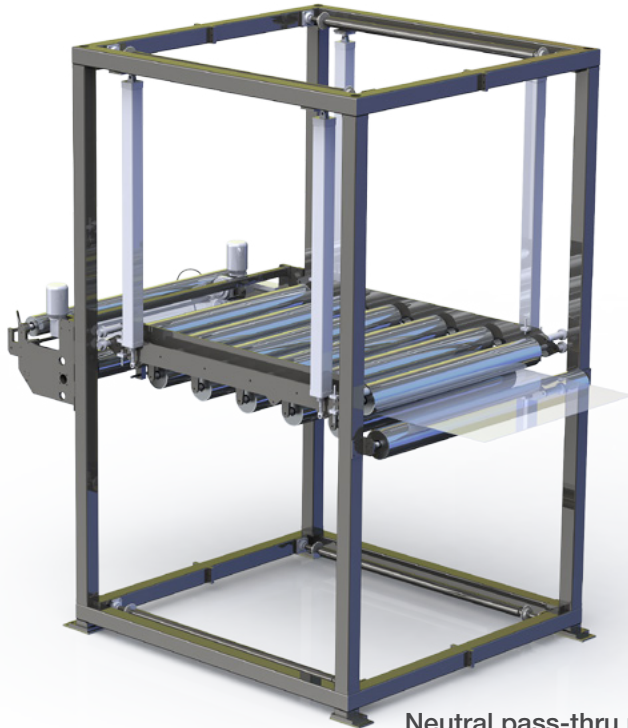
Model TRC-72 Coater Shown From Upstream Perspective

**TRANSFER ROLL COATER**

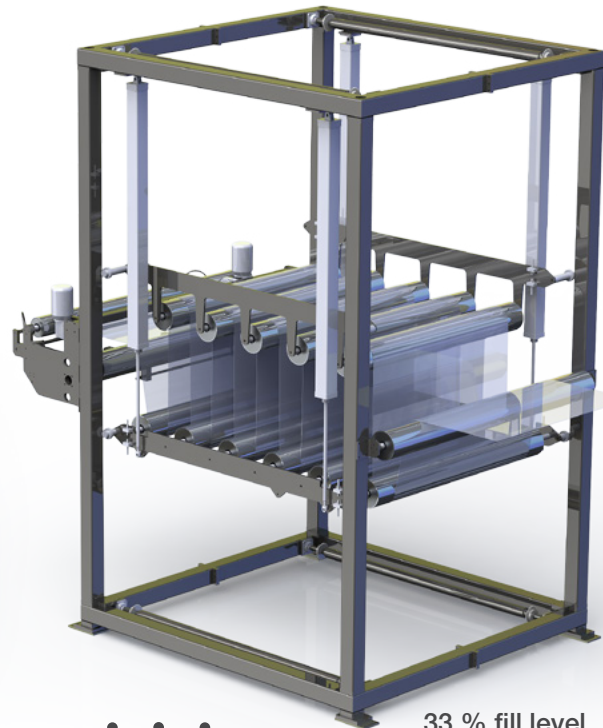
MODEL	ROLL WIDTH	HEIGHT	WIDTH	LENGTH(MD)	RESERVOIR	HEAT REMOVAL RATE
	IN MM	IN MM	IN MM	IN MM	GAL L	BTU/Hr
TRC-42	42 1070	54 1370	71 1800	34 860	14 53	10,220
TRC-48	48 1220	54 1370	77 1960	34 860	15 57	11,660
TRC-54	54 1375	54 1370	83 2110	34 860	16 61	12,960
TRC-60	60 1525	54 1370	89 2260	34 860	18 68	14,380
TRC-66	66 1675	54 1370	95 2410	34 860	19 72	15,840
TRC-72	72 1830	54 1370	101 2570	34 860	20 76	17,280



# Accumulators



Neutral pass-thru position



33 % fill level



Operator shuts off accumulator to deactivate the safety cage door lock for access purposes

## Features:

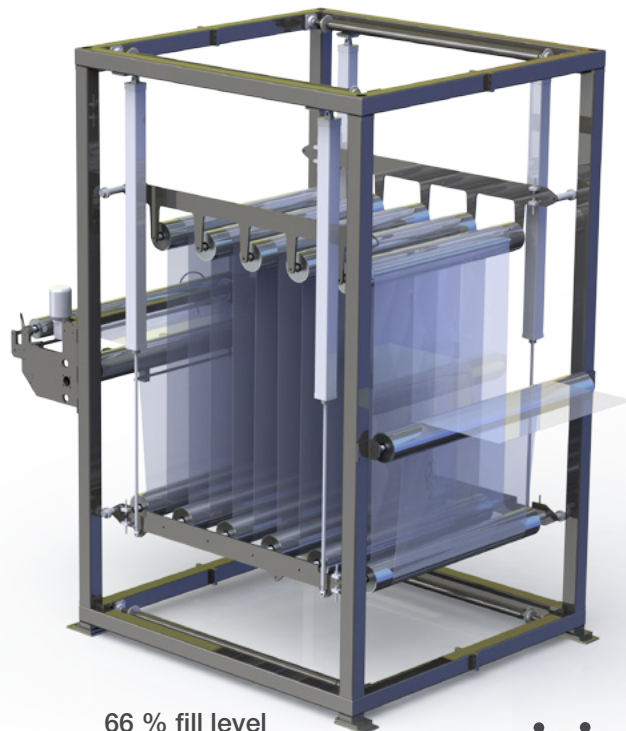
- **Neutral pass-thru provides ease of accumulator thread up**
- **Pneumatic tension control permits precise regulation of sheet tension**
- **Low friction oversized idlers provides high performance accumulation while avoiding web breaks**
- **Safety access doors with interlocks to assure operator safety during maintenance access**
- **High level alarm/interlock prevents over filling the accumulator carriage**
- **Heavy duty framework assures robust performance while maintaining accurate sheet tracking during the life cycle of the accumulator**



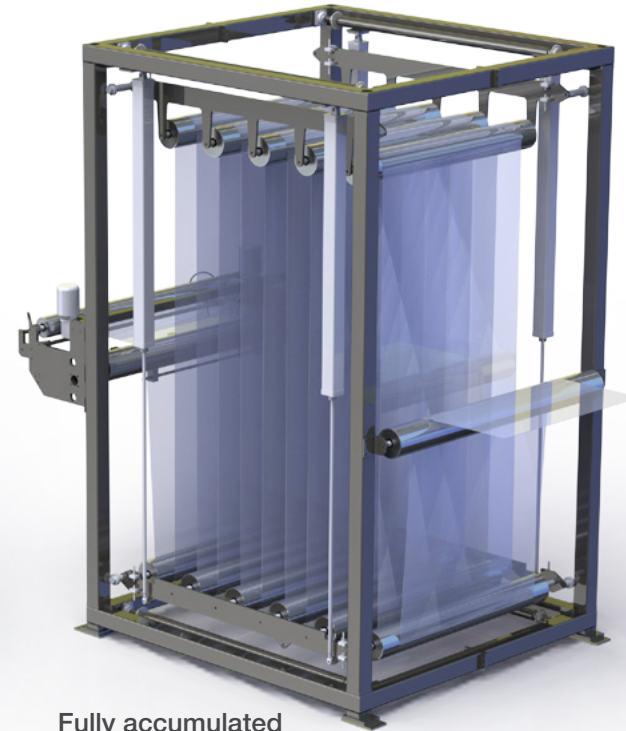
# Accumulators Accumulators Accumulators Accumulators



Operator gains access thru safety cage door during maintenance and web-up activities



66 % fill level



Fully accumulated

• • • • •

• • •

ACCUMULATOR

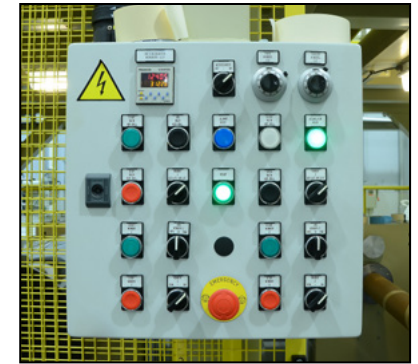
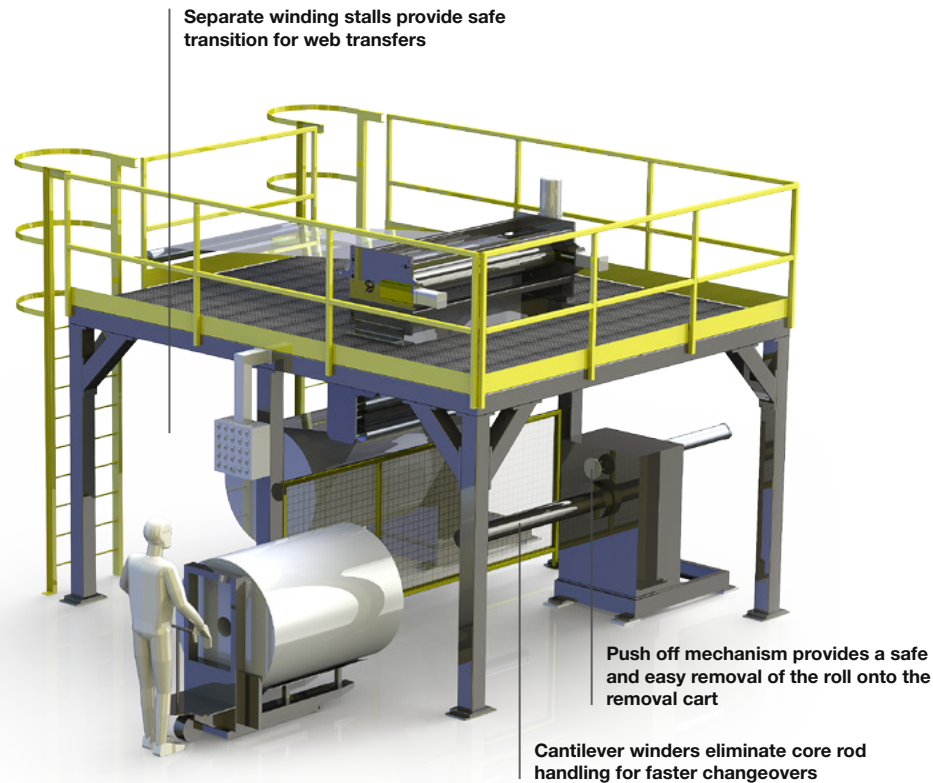
MODEL	CAPACITY			ROLL WIDTH	HEIGHT	WIDTH	LENGTH (MD)								
	65FT	100FT	130FT				65FT	100FT	130FT						
	IN	MM	IN	MM	IN	MM	IN	MM	IN	MM					
A-42XXX	A-4265	A-42100	A-42130	42	1070	163	4140	71	1810	68	1730	101	2565	134	3400
A-48XXX	A-4865	A-48100	A-48130	48	1220	163	4140	77	1960	68	1730	101	2565	134	3400
A-54XXX	A-5465	A-54100	A-54130	54	1375	163	4140	83	2115	68	1730	101	2565	134	3400
A-60XXX	A-6065	A-60100	A-60130	60	1525	163	4140	89	2265	68	1730	101	2565	134	3400
A-66XXX	A-6665	A-66100	A-66130	66	1675	163	4140	95	2420	68	1730	101	2565	134	3400
A-72XXX	A-7265	A-72100	A-72130	72	1830	163	4140	101	2565	68	1730	101	2565	134	3400

# Winders

## Cantilevered



Model CW-5440/2 Cantilever Winder featuring 2 winding positions and full surround safety caging



Intuitive controls offer ease-of-use operator interface

Model CW-6040/2 Cantilever Winder – 2 Position - Single Web Winding

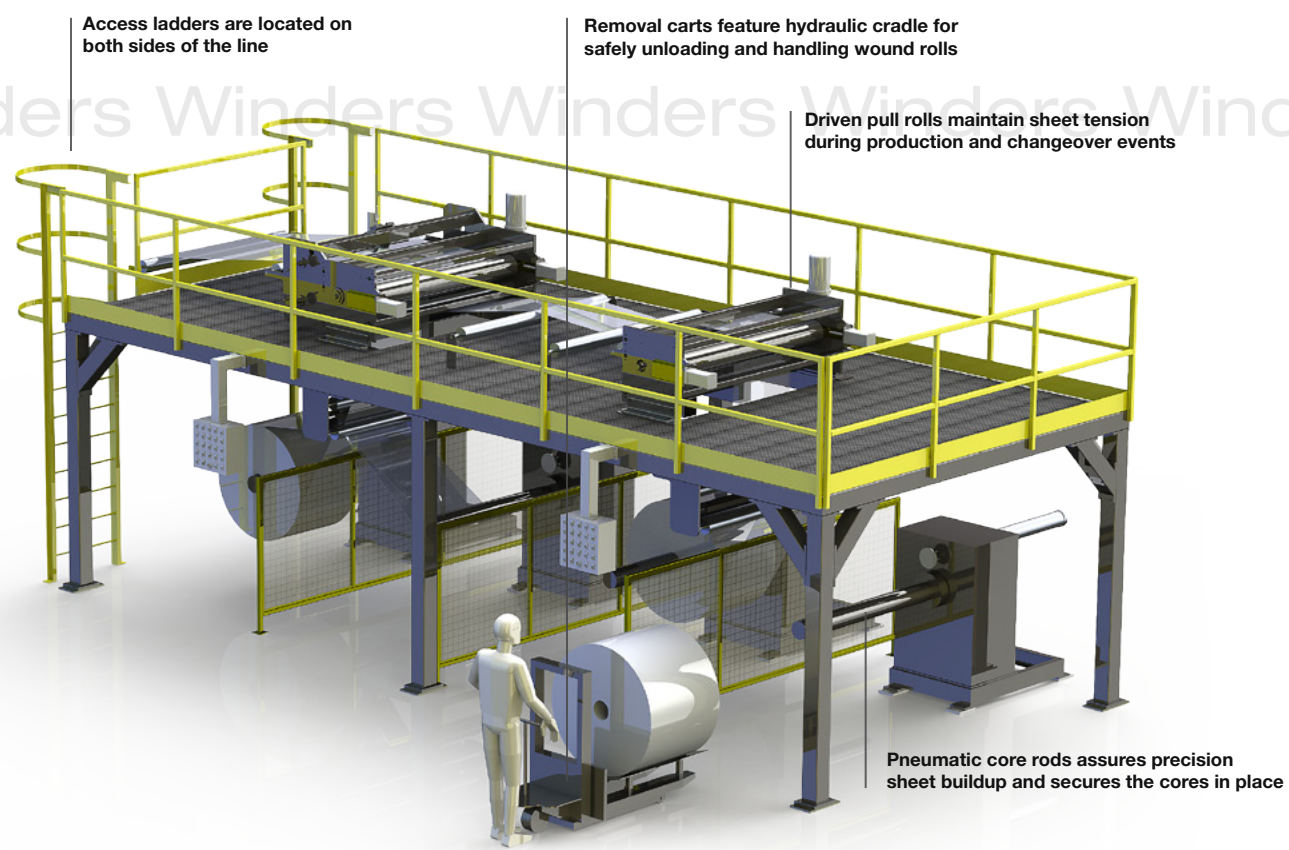
Please Note: All winder images show web paths originating from left to right

### General Features:

- **Mezzanine provides a delivery pathway of the sheet to the winding positions for precision web tracking and tension control**
- **Each pair of winding positions include a driven set of nip rollers, guide idlers and a static eliminator**
- **Winding stalls feature task lighting for operator safety during web transfers**
- **Safety caging and interlocked doors restrict access during winding and web transfer per safety standards and practices**
- **Intuitive controls provide operators with a sensible production grade operator interface for ease of use**
- **Heavy duty framework throughout assures robust precision winding solution through equipment life cycle**



Winders Winders Winders Winders Winders Winders



Model CW-6040/4 Cantilever Winder – 4 Position - Dual Web Winding

CANTILEVER

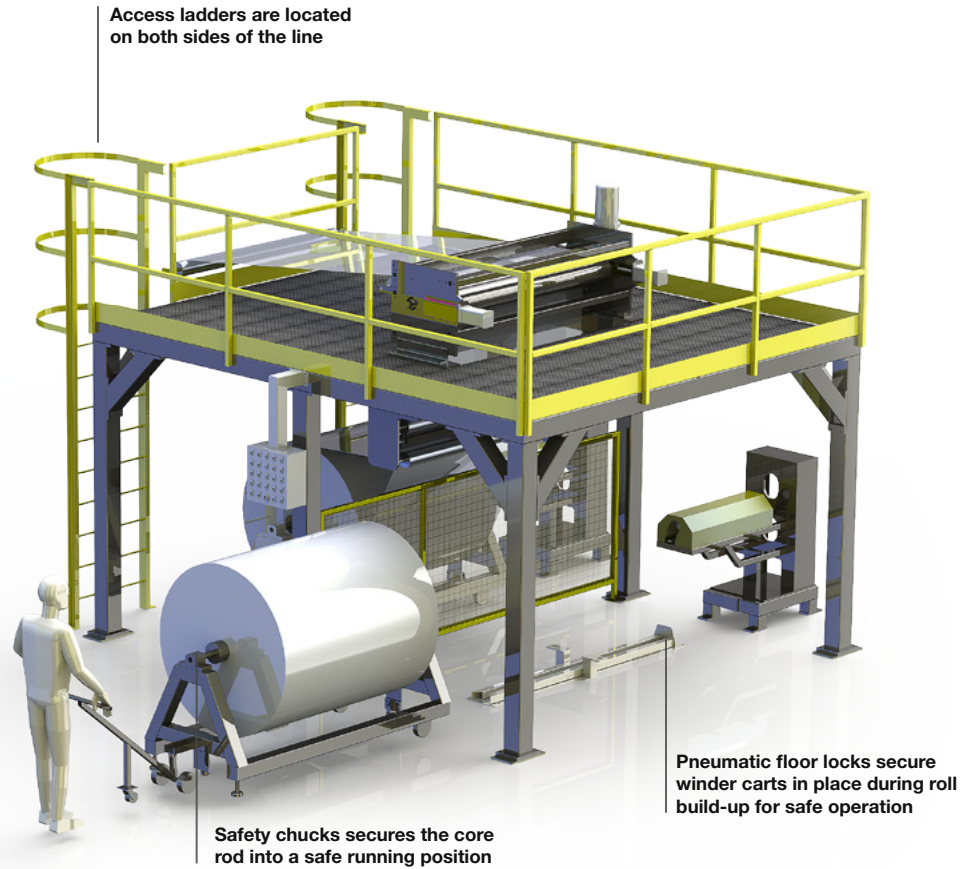
MODEL	ROLL DIAMETER		ROLL WIDTH	HEIGHT	WIDTH	LENGTH (MD)						
	2 Pos	4 Pos				2 Pos	4 Pos					
	IN	MM				IN	MM					
CW-4240/X	40	1000	42	1070	90	2290	167	4245	170	4320	333	8460
CW-4840/X	40	1000	48	1220	90	2290	173	4400	170	4320	333	8460
CW-5440/X	40	1000	54	1375	90	2290	179	4550	170	4320	333	8460
CW-6040/X	40	1000	60	1525	90	2290	185	4700	170	4320	333	8460

# Winders

## A-Frame



Intuitive controls offer ease-of-use operator interface



Access ladders are located on both sides of the line

Safety chucks secures the core rod into a safe running position

Pneumatic floor locks secure winder carts in place during roll build-up for safe operation

Model AW-7248/2 A-Frame Winder – 2 Position - Single Web Winding

Please Note: All winder images show web paths originating from left to right

A-FRAME

MODEL	ROLL DIAMETER		ROLL WIDTH	HEIGHT	WIDTH	LENGTH (MD)								
	2 Pos	4 Pos				2 Pos	4 Pos							
	IN	MM	IN	MM	IN	MM	IN	MM						
AW-4248/X	48	1220	48	1220	42	1070	137	3480	162	4100	193	4900	333	8460
AW-4848/X	48	1220	48	1220	48	1220	137	3480	168	4260	193	4900	333	8460
AW-5448/X	48	1220	48	1220	54	1375	137	3480	174	4410	193	4900	333	8460
AW-6048/X	48	1220	48	1220	60	1525	137	3480	180	4560	193	4900	333	8460
AW-6648/X	48	1220	48	1220	66	1675	137	3480	186	4710	193	4900	333	8460
AW-7248/X	48	1220	48	1220	72	1830	137	3480	192	4870	193	4900	333	8460



Winding stalls provide safe transition for web transfer to the ready position from the active position

Driven pull rolls maintain sheet tension during production and changeover events

Drive shaft disengagement permits a quick and easy changeover and roll removal

Winders Winders Winders Winders Winders Winders



A-Frame Winder Model AW-7248/4 has 4 winding positions at 72 in. widths & 48 in. roll diameters



Pneumatic core rods assures precision sheet buildup and secures the cores in place

A-Frame robust design permits large roll build-ups

Model AW-7248/4 A-Frame Winder – 4 Position - Dual Web Winding

HEAVY DUTY A-FRAME

MODEL	ROLL DIAMETER		ROLL WIDTH	HEIGHT	WIDTH	LENGTH (MD)						
	2 Pos					4 Pos						
	IN	MM				IN	MM	IN	MM			
AW-4260/X	60	1525	42	1070	137	3480	162	4100	193	4900	333	8460
AW-4860/X	60	1525	48	1220	137	3480	168	4260	193	4900	333	8460
AW-5460/X	60	1525	54	1375	137	3480	174	4410	193	4900	333	8460
AW-6060/X	60	1525	60	1525	137	3480	180	4560	193	4900	333	8460
AW-6660/X	60	1525	66	1675	137	3480	186	4710	193	4900	333	8460
AW-7260/X	60	1525	72	1830	137	3480	192	4870	193	4900	333	8460

# Quick & Easy Operations

*Cut Over & Start-up (... 15 seconds)*



1. Once the active winder position & pull roll are stopped the accumulator begins to fill with sheet



2. Cut the sheet beneath the static eliminator and guide idler rolls for transfer



3. Jog the leading edge of the sheet towards the taped core



4. Transfer the leading edge of sheet onto the taped core



5. Jog the winder spindle several revolutions to assure the sheet is securely wrapped



6. Transferred sheet shown securely wrapped onto the winder spindle



7. Close the safety door to eliminate hazards prior to reactivating the winder position



8. Transfer complete, winder position & interlocks reactivated, winding resumes & accumulator empties excess sheet



## *Roll Removal & Prep Next Transfer*



1. Transfer completed from the prior steps shown & the safety door is unarmed for access



2. Safety door is opened to initiate wound roll removal & the core rod is deflated



3. Roll removal cart is centered under the wound roll into the proper unloading position



4. Cart cradle is raised using the hydraulic hand pump (right hand) until the roll weight is fully supported



5. Pneumatic push-off mechanism (lever controlled) is extended until the roll travels off the spindle



6. Push-off mechanism is retracted & the cart is manually removed from the winder stall

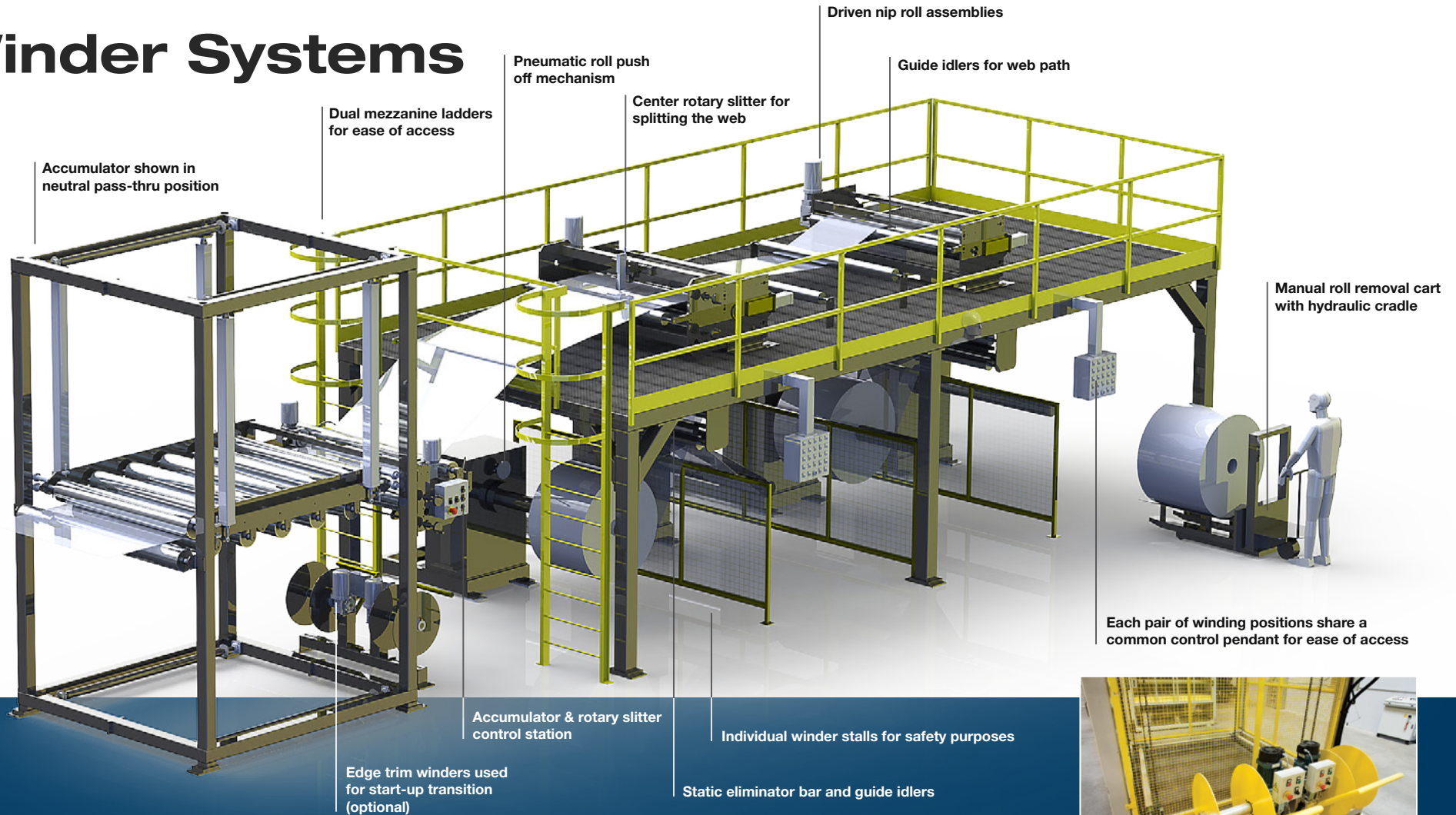


7. A new winding core is inserted onto the core rod shaft



8. Transfer prep is completed once double-sided tape is applied to the new core & core rod shaft is re-inflated

# Winder Systems



## Process Summary Example:

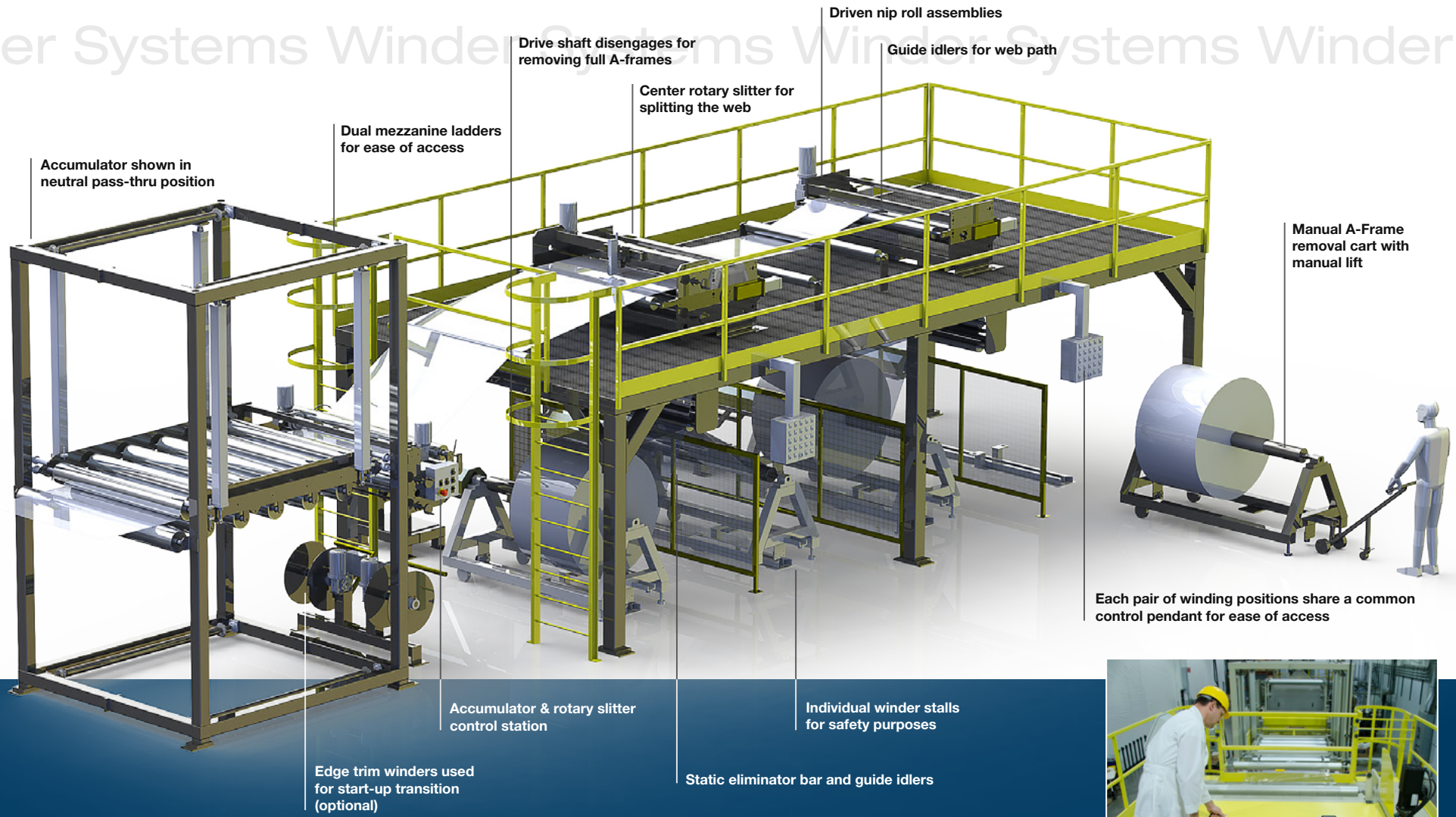
<b>Width:</b>	60 in (1,525 mm)
<b>Line Speed:</b>	180 fpm (55 mpm)
<b>Gauge Range:</b>	8 – 40 mils (0.2 – 1.0 mm)
<b>Accumulation:</b>	100 ft (30 m)
<b>Wound Dia.:</b>	40 in (1 m)

Model Nos. A-60100 Accumulator & CW-6040/4 Cantilever Winder – 4 Position – Dual Web Winding



Optional Edge Trim Winders located beneath slitter assembly for start-up transition





**Process Summary Example:**

<b>Width:</b>	72 in (1,830 mm)
<b>Line Speed:</b>	240 fpm (70 mpm)
<b>Gauge Range:</b>	8 – 40 mils (0.2 – 1.0 mm)
<b>Accumulation:</b>	130 ft (40 m)
<b>Wound Dia.:</b>	48 in (1.2 m)

*Model Nos. A-72130 Accumulator & AW-7248/4 A-Frame Winder – 4 Position – Dual Web Winding*



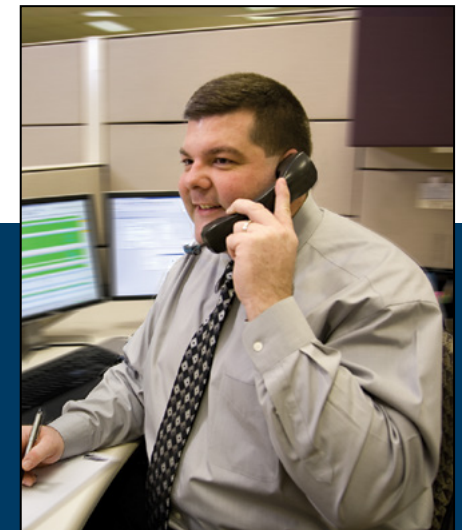
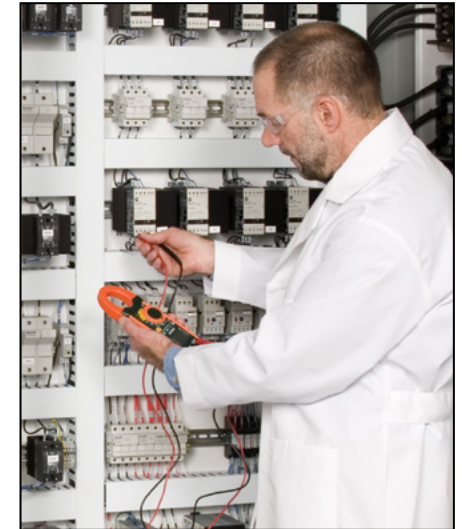
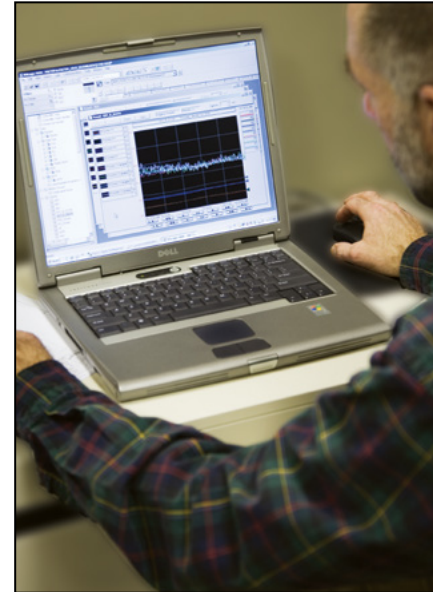
Operator accesses guard hatch door to the driven nip rolls on top of the mezzanine

# Customer Services

The success of a project is measured by the level of customer satisfaction that is maintained before and after the project has reached a conclusion.

Manufacturers of machinery can be ranked accordingly by the level of service a customer receives once the equipment is placed into operation.

PTi prides itself on being a world class manufacturer of high quality products and supplier of professional services.





Customer satisfaction is our number one goal. Please contact one of our sales representatives for more information on PTi's products and services.

PTi provides our customers with a full complement of support services before, during and long after the start-up phase of the project. These services include:

- Mechanical, electrical and process diagnostics and troubleshooting
- Project planning, scheduling and coordination
- Installation supervision and related support
- Engineer services, start-up support and training
- Laser bore alignment services
- Warranty and spare parts support
- Repair and modification site support



# Quality, Reliability and a Commitment to Excellence...



Processing Technologies International, LLC  
2655 White Oak Circle | Aurora, IL 60502-9674  
T: 630.585.5800 | F: 630.585.5855

